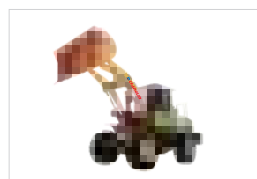


## Optional Attachment



Wheel Loader



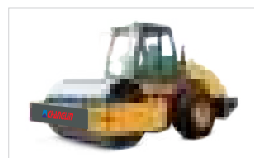
Motor Grader



Excavator



Backhoe Loader



Vibratory Roller



Crane



Bulldozer



Paver

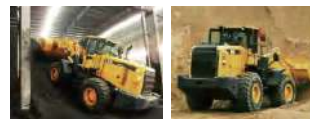


Skid Steer

# ZL30H

SINOMACH-HI INTERNATIONAL EQUIPMENT CO.,LTD.

额定功率(Rated Power):97kW (Cummins) /92kW (WeiChai) @2200rpm  
操作重量(Operating Weight):10200Kg 额定斗容(Rated Bucket Capacity):1.7m³



- Equipped with WeiChai Engine.
- 4 forward 2 reverse power shift transmission.
- Combined seal cylinder obtains high seal performance and more reliability.



国机重工集团国际装备有限公司

SINOMACH-HI INTERNATIONAL EQUIPMENT CO., LTD.

Add: No. 898 West Huang He Road, Changzhou city, Jiangsu Province, China  
PC: 213136

Tel: +86 18206118629

Https://www.cnchanglin.com/

E-mail: sales8@changlin.com.cn



国机重工集团国际装备有限公司  
SINOMACH-HI INTERNATIONAL EQUIPMENT CO.,LTD.



### 发动机 (Engine)

型号..... 潍柴 WP6G125E332  
Model..... WeiChai WP6G125E332  
型式..... 直喷、涡轮增压、水冷  
Type..... Direct injection, turbocharged, water cooling  
额定功率 Rated Power..... 97/92kW  
额定转速 Rated Speed..... 2200rpm



### 变速系统 (Transmission System)

变矩器型式..... 单级单三相元件  
Torque converter type..... Single stage, single phase and 3-elements  
冷却方式..... 油冷压力循环式  
Cooling mode..... Oil cooling pressure circulating  
变速箱型式..... 圆柱斜齿轮平行轴式  
Transmission type..... Cylindrical helical gear parallel shaft type  
档位 (前进/后退)..... 前四后二 S  
hifts (Forward/Backward)..... F4/R2  
行驶速度 (km/h) Traveling speed  
前进 Forward 7.8 14.7 23.5 41.2  
后退 Reverse 10.8 31.6



### 驱动桥 (Axles)

最大牵引力 Max. drawing force..... 96kN  
主传动速比 Gear ratio of main drive..... 4.222  
轮边减速比 Gear ratio of hub reduction..... 4.8  
最大爬坡能力 Max. gradient ability..... 30°



### 转向系统 (Steering System)

型式..... 中间铰接、负荷传感全液压转向  
Type..... Middle articulated frame, load sensing full hydraulic steering  
转向角 Steering angle.....  $\pm 38^\circ$   
最小转弯半径 Min. steering radius (Center of front wheel)..... 4885mm  
系统压力 System pressure..... 16MPa  
发动机额定转速时的流量..... 110L/min  
Flow rate at engine rated speed..... 110L/min  
转向油缸数-缸径×行程..... 2- $\phi 70 \times 357$ mm  
No. of cylinders-Bore × Stroke..... 2- $\phi 70 \times 357$ mm



### 工作装置 (Working Equipment)

最大掘起力 Max. breakout force..... 96kN  
卸载高度 Dumping clearance..... 2934mm  
卸载距离 Dumping reach..... 1043mm  
倾翻载荷 (全转向) Tipping load full turn..... 5880kg



### 工作液压系统 (Working Hydraulic System)

型式 Type..... 双手柄软管操纵, 可选先导操纵  
Double handle flexible shaft control, Pilot control optional  
系统压力 System pressure..... 16MPa  
发动机额定转速时的流量..... 220L/min  
Flow rate at engine rated speed..... 220L/min  
油缸数量-缸径×行程 No. of cylinders-Bore × Stroke  
举升油缸 Lifting cylinder..... 2- $\phi 125 \times 697$ mm  
翻斗油缸 Tilting cylinder..... 1- $\phi 150 \times 434$ mm  
提升时间 Lifting time..... 5.2s  
下降时间 Lowering time..... 3.0s  
卸载时间 Dumping time..... 1.1s



### 轮胎 (Tyre)

轮胎规格 Tyre size..... 17.5-25-12PR



### 制动系统 (Brake System)

行车制动..... 钳盘式四轮制动  
Service Brake..... Caliper Disc Four-Wheel Brake  
驻车制动..... 手动软管轴控制制动器  
Parking brake..... Manual air-controlled actuate drum brake act as emergency brake.



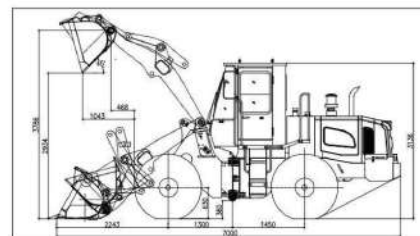
### 油量 (Refill Capacity)

燃油箱 Fuel tank..... 130L  
发动机曲轴箱 Engine oil..... 13.5L (Cummins) /17L (WeiChai)  
双变系统 T/C and T/M..... 38L  
液压油箱 Hydraulic tank..... 120L  
前后桥 F/R axles..... 15L/15L



### 驾驶室 (Cabin)

Vibration-absorbed humanistic cabin and streamline dashboard provide low noise, comfortable operation and wide eyeshot.



### Best Power Performance



- Adopted WeiChai engine that features large power reservation, low oil consumption and good power performance.
- Internationally sourced bearing in crucial places of T/C & T/M and driving axle ensures high reliability.
- Long-time tested YUNYU brand driving axles more suitable for tough working sites.

### Reliable Brake System

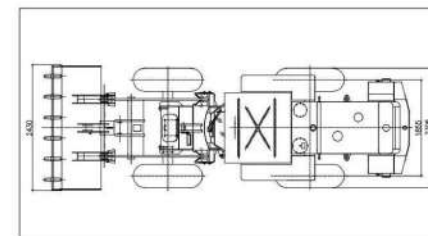


- Axle housing and hub reduction adopted separate structure that features low maintenance cost.
- Dual piping service brake with caliper disc brake ensures safety and reliable.

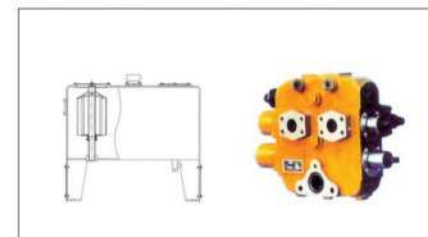
### Comfortable Cabin



- Cabin featured luxury interior decoration and beautiful appearance and good eyeshot.



### High Efficiency Hydraulic System



- Working system adopted independent hydraulic that features simple structure and high stability and low maintenance cost.
- Pipe joints adopted advanced sealing method ensure better sealing effect.
- Hydraulic tank with vacuum device ensures easy maintenance and fixing of hydraulic system.

### Heavy-duty Working Equipment



- The optimized strengthened front/rear frame was more solid and durable, single-plate structure of rear frame reduce distortion and irregular welds and greatly promote reliability.
- The working equipment with optimized design of single swing arm has big break force and high working efficiency.



Wheel Loader Motor Grader Excavator Backhoe Loader Vibratory Roller Bulldozer  
**Construction Machinery**