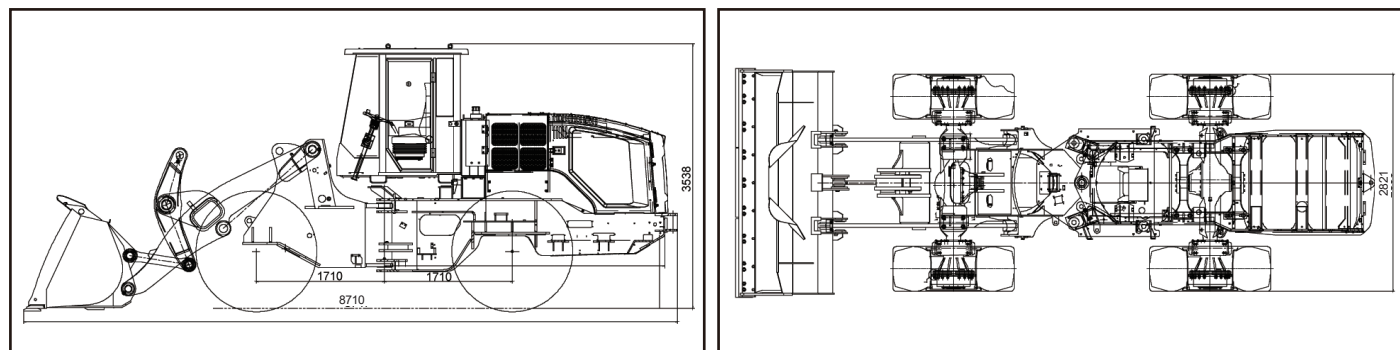


外形尺寸 Figure Size



可选装置 Optional attachment

- 抓具（车）设计制造专家，目前国内市场保有量最大；
Due to expert of clamp design and manufacturing, the total existing market share is the biggest in China;
- 另可配备自动越障式推雪板、装煤斗、矿石斗、高卸装置；
Optional equipment like, hydraulic hammer, snow-shoving board, coal bucket, rock bucket, high-dump device are available;



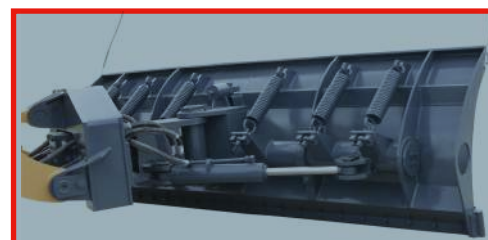
通用抓



分体抓



草抓



推雪板

60年专业打造
精心设计·用心服务

960Ev
电动装载机



国机重工集团国际装备有限公司

SINOMACH-HI INTERNATIONAL EQUIPMENT CO., LTD.

Add: No. 898 West Huang He Road, Changzhou city, Jiangsu Province, China

PC: 213136

Tel: +86 18206118629

Https://www.cnchanglin.com/

E-mail: sales8@changlin.com.cn



960Ev Electric Wheel Loader Features:

960Ev is a pure electric product based on the 9 series of mature loaders. It selects high-quality components in the industry and independently researches and develops the electric control system, realizing three major improvements in efficiency, economy and reliability. It is upgraded in all aspects of appearance design, hydraulic control, electrical system, machine safety, maintenance operation, etc. The overall performance is characterized by high quality, high efficiency, high reliability and low consumption, and is widely recognized in the market.

基本参数 Parameters	
斗容 Bucket capacity(m³)	3.5
额定载重量 Rated load(kg)	6000
额定功率 Rated power(kW)	120/60
整机操作重量 Operating mass(kg)	19200
最大牵引力 Max. traction force(kN)	171
最大掘起力 Max. lifting force(kN)	175
最大爬坡能力 Gradeability(°)	30
最小转弯半径(轮胎外侧) Min. turning radius (over tire) (mm)	6371
车宽(车轮外侧) Width (outside of wheels)(mm)	2821
三项和时间 Motion cycle(s)	10
提升时间 Lifting time(s)	5.1
卸载时间 Unloading time(s)	1.3
下降时间 Descent time(s)	3.6
卸载角 Dumping angle(°)	45
卸载高度 Max. dump clearance(mm)	3138-3663
卸载距离 Dump reach(mm)	1200
最小离地间隙 Min. ground clearance(mm)	450
轴距Wheelbase(mm)	3420
轮距Tread(mm)	2226
续航时间 Duration(h)	6-8h
转向角Steering angle(°)	38
外形尺寸长*宽*高Overall dimensions(mm)	8710*2821*3537

其他参数 Other parameters	
轮胎规格 Tire specifications	23.5-25-20PR L-3
空调制冷量 Air conditioning cooling capacity	≥4kW
空调制热量 Air conditioning heating capacity	≥3kW

制动系统 Brake system	
行车制动型式 Service Brake	Hydraulic clamp disk type
驻车制动形式 Parking brake	Inner-expanding type

电子电控系统 Electronic control system	
动力电池类型 Battery type	LFP
动力电池电量 Battery capacity(kWh)	400/423
动力电池额定电压 Battery rated voltage(V)	600
电机峰值转速 motor peak speed(rpm)	6000
行走电机功率 Traveling motor power(kW)	120
行走电机峰值功率 Traveling motor peak power(kW)	200
工作电机功率 Service motor power(kW)	60
工作电机峰值功率 Peak power of Service motor(kW)	140

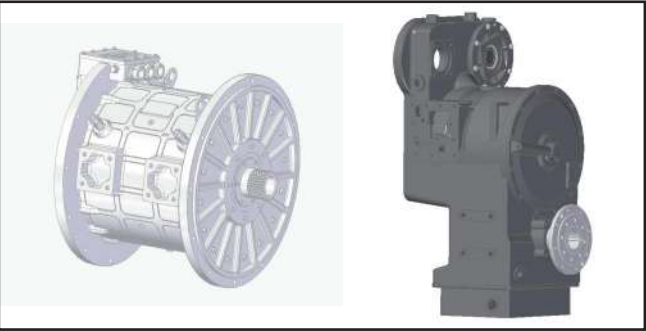
液压系统 Hydraulic system		
工作装置液压压力 Working device pressureMpa	20	
转向液压系统 Steering hydraulic system	Coaxial flow amplification	
工作液压系统 Working hydraulic system	Dual Pump Combination	
工作操纵形式 Maneuvering form	Pilot control	

传动系统 Transmission system		
变速箱型式 Type	Planetary powershift	
档位 Gear	2F/2R	
最高车速 Max. speed	39	
主传动型式 Main drive type	Spiral Bevel Gear Primary Reduction	
轮边减速型式 Wheel-side reduction	Cylindrical spur gear planetary drive	
驱动形式 Drive type	direct-drive	

各档最高车速 Maximum speed in each gear	
F1/R1(km/h)	13/16
F2/R2(km/h)	39/39
F3/R3(km/h)	/
F4/R4(km/h)	/

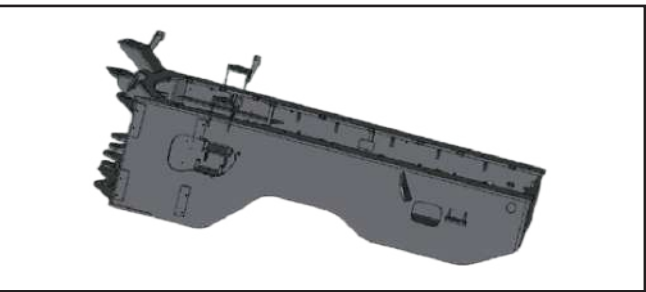
加油量 Fueling volume	
液压油 Hydraulic oil(L)	180
电池散热 Battery cooling(L)	30
电机散热 Motor Cooling(L)	30
前/后桥 Front/Rear Axle(L)	18×2
行走变速箱 Gearbox(L)	30

最佳匹配传动系统 Best Match Drive System



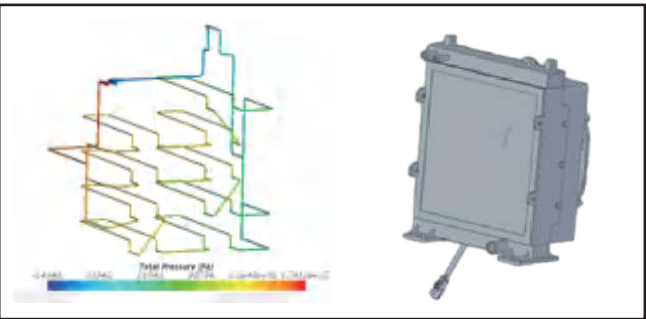
- The traveling system and hydraulic system are driven by permanent magnet synchronous dual motors with high power, high reliability and long life.
- The proven electro-hydraulic controlled planetary gearbox and heavy-duty drive axle provide high load carrying capacity and more reliable transmission.
- It quipped with 4 working curves for drivers to choose according to different operating scenarios. The electronic control system accurately controls the motor output speed and torque according to the work load, which improves the efficiency of the transmission system and hydraulic system and extends the range.

重载荷工作装置 Heavy Duty Working Device



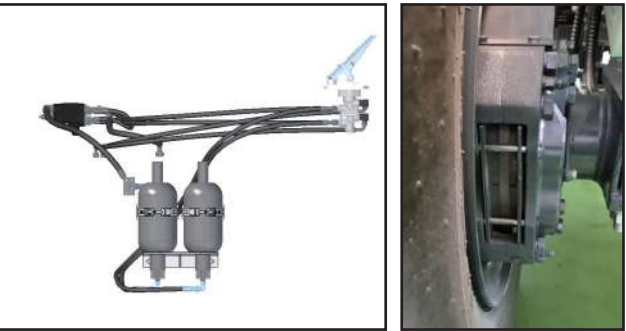
- Third-generation new frame with modular design concept, stronger load carrying capacity and torsional rigidity.
- Standard with extended arm, Max.dumping height 3408mm, more flexible and convenient.
- Equal-wheelbase and long-wheelbase design for superior stability.
- Improve the full bucket rate and add deflector plates on the back of the bucket to prevent material from spilling and causing safety accidents.

高效的散热系统 Efficient Cooling System



- The heat dissipation system adopts independent module heat dissipation, which is monitored by electronic fan in real time, and the heat dissipation is carried out by infinitely adjusting the speed according to the water temperature of the motor, the oil temperature of the transmission oil and the hydraulic oil.
- The lithium battery pack comes standard with a heat pipe circuit unit, which is heated or cooled according to the temperature of the battery, so that the battery works in the optimal temperature range and prolongs the service life of the battery.

先进可靠的制动 Advanced And Reliable Brake System



- Adoption of full hydraulic braking system, can work continuously, maneuvering comfort, sensitive system response, low hysteresis of instrument.
- Maintenance-free routine for brake system parts.
- Braking system with energy recovery and extended service life.

A New Appearance To Upgrade, Humanized Design



- Inheriting the Group's generalized styling design style and integrating the modern sense of technology of new energy construction machinery.
- The cab integrates ergonomics design and implements the human-oriented design concept, with air-suspension vibration-damping seats, pilot-operated steering and adjustable steering columns, which make it comfortable to maneuver and beautiful to look at.
- Vehicle-mounted intelligent display terminal, equipped with a multi-channel intelligent fault diagnosis system and a variety of intelligent reminder functions, making human-computer interaction more convenient and efficient.

可靠的液压系统 Reliable Hydraulic System



- Hydraulic system adopts double pumps combined flow, with inlet and return oil filters, standard with pilot operation.
- Newly designed articulated piping, dumping cylinder piping, more reasonable direction;
- High versatility with the company's fuel loader hydraulic components, more convenient maintenance.